

Reset Instruction of Network Camera

This document includes the information of the reset operation and the position of reset button of the network cameras.

1. THE OPERATION OF RESET

1.1 The camera should connect power, click the reset button for at least **5 seconds** until the camera restart, and then the camera will restore factory default setup.

- If there is a PWR indicator, you can check the indicator go off and on again.
- If it is a IR camera, you can check the IR LED turn on again.
- For others situation, keep the operation long enough to make sure the camera restart.

1.2 Most of the reset is a button, but some of them are just terminals or cables that you need to do a shortage to finish this operation. You will see some samples below.

2. THE POSITION OF THE RESET

Mainly it depends on the type of the camera, when you see the appearance you can make a judge accordingly. The types of the IP camera are listed below:

2.1 Indoor Fixed Network Camera

Appearance:

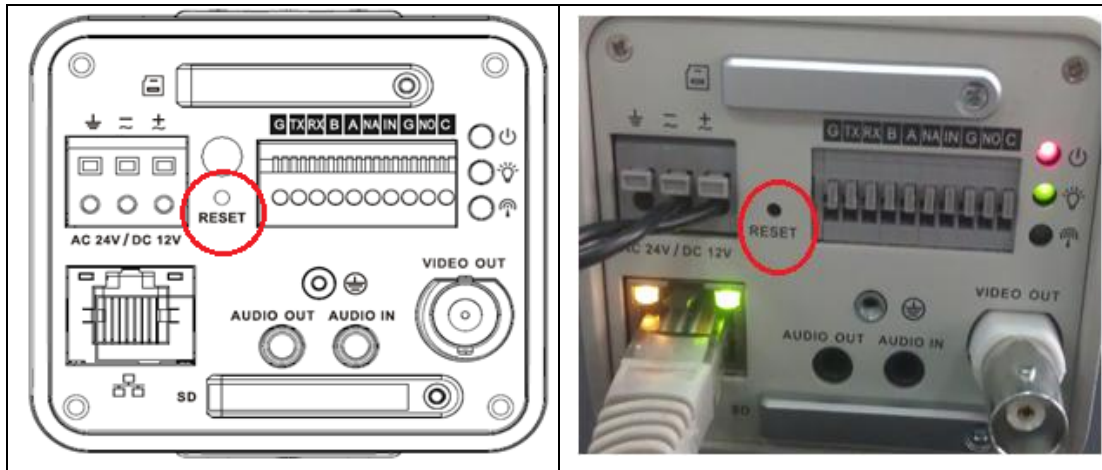


These kinds of IP cameras, the reset button is always on the back panel of the camera, with a mark "RESET"

Models:

IPC-HF3500 series
IPC-HF3300 series
IPC-HF3301 series
IPC-HF3200 series
IPC-HF3211 series
IPC-HF3100 series
IPC-HF3110 series
IPC-HF3101 series

The pictures below are the sample of back panel. (The appearance may not exactly the same)



2.2 IR waterproof fixed network camera.

Some of these cameras (earlier models) were combined with Multiple-function combination Cable that you need to do a shortage to reset.

Appearance:



Models:

HFW3300 series

HFW3110 series

The picture below is the cable coming out of the camera; you need an extension cable to do the reset. Shortage the **Blue** wire (RESET) and the **Orange** wire (GND) for at least 5 seconds until the camera restart.

Multiple combination cable and MD9M cable



MD9M cable connector



2.3 IR Waterproof Fixed Network Camera (With Integrated Bracket)

Appearance:



- A. Most of this kind of camera, there will be a multiple-function combination cable coming out of the bottom of the bracket. You can find one that is the reset cable.

Models:

IPC-HFW3300C

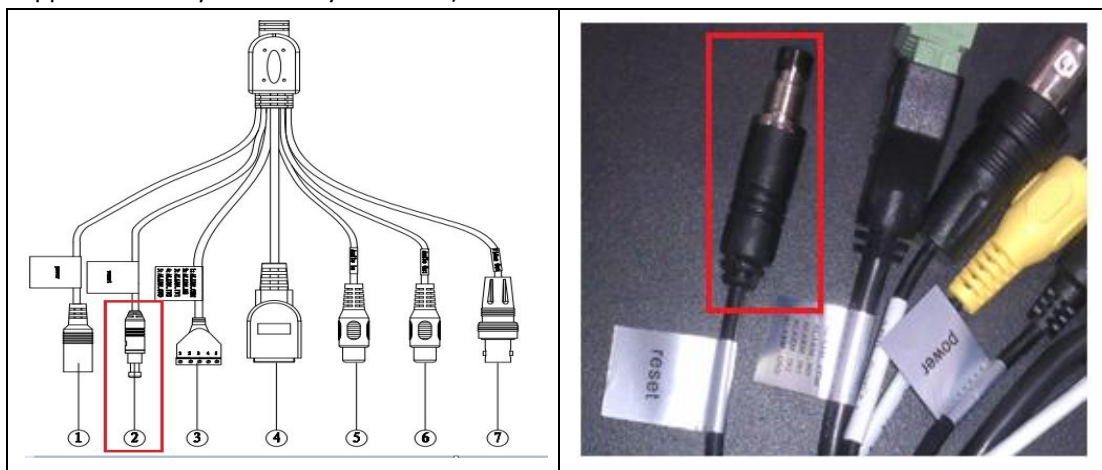
IPC-HFW3200C

IPC-HFW3202C

IPC-HFW3100C

IPC-HFW3101C

The pictures below are the sample of multi-function cable, and the reset is a button. (The appearance may not exactly the same)



- B. Some earlier models

There is also a multiple-function combination cable; the reset terminal is together with the alarm terminal (you can find the label), you need shortage the **RESET** and **GND** pin (7&6 in the picture below) for at least 5 seconds to make a reset.



2.4 Mini IR Waterproof Fixed Network Camera (With Integrated Bracket)

Appearance:

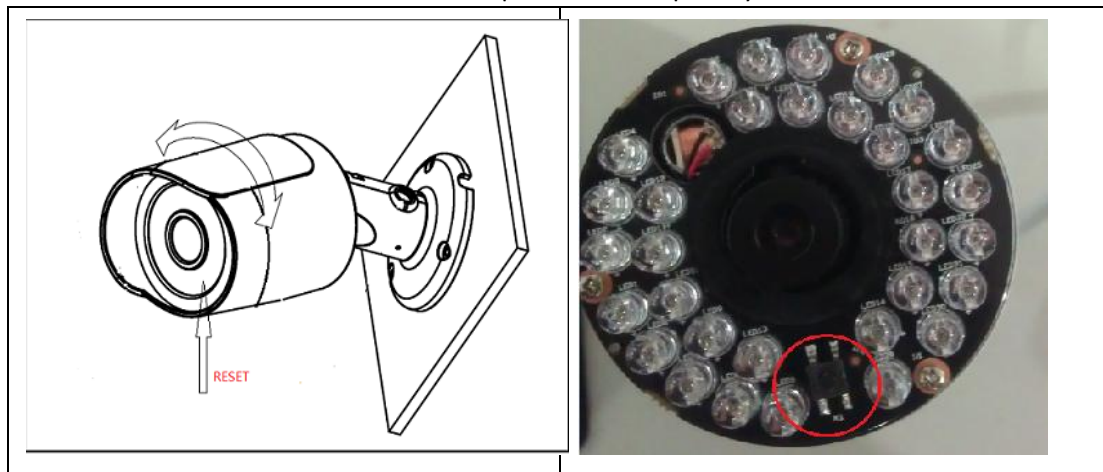


Models:

IPC-HFW3200SP/N series

IPC-HFW2100S series

The reset button is inside of the camera, open the lens cap and you will find it.



2.5 (IR) Vandal Proof Network Dome Camera (and In-ceiling model)

Appearance:



Models:

IPC-HD/HDW3100 series

IPC-HD/HDW3200 series

IPC-HDB/HDBW3202 series

IPC-HDB/HDBW3101 series

IPC-HDB/ HDBW5100 series

IPC-HDB/ HDBW5200 series

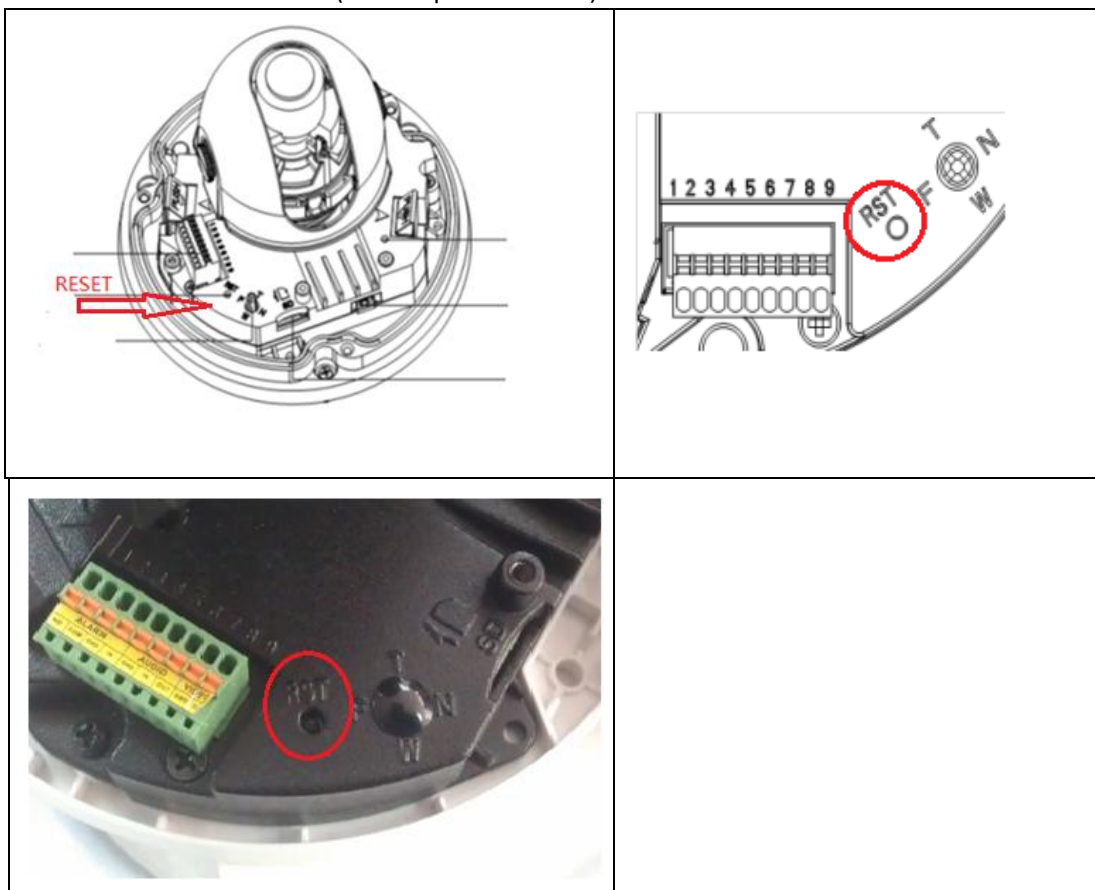
IPC-HDB/HDBW 3202-DI series (DI means in-ceiling model)

IPC-HDB/HDBW 3200-DI series

IPC-HDB/HDBW 3101-DI series

IPC-HDB/HDBW 3100-DI series

The reset button is inside of the camera, open the dome camera enclosure; you will find it next to the alarm terminals (see the picture below).



2.6 Mini dome

Appearance:



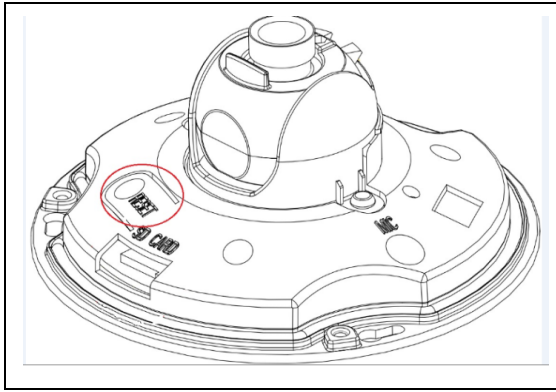
Models:

IPC-HDB3200C series

IPC-HDB3100C series

IPC-HD2100C series

The reset is inside the camera, open the dome camera enclosure and you can find it.



2.7 Mobile Network Camera (and some dome network camera)

Appearance:



Models:

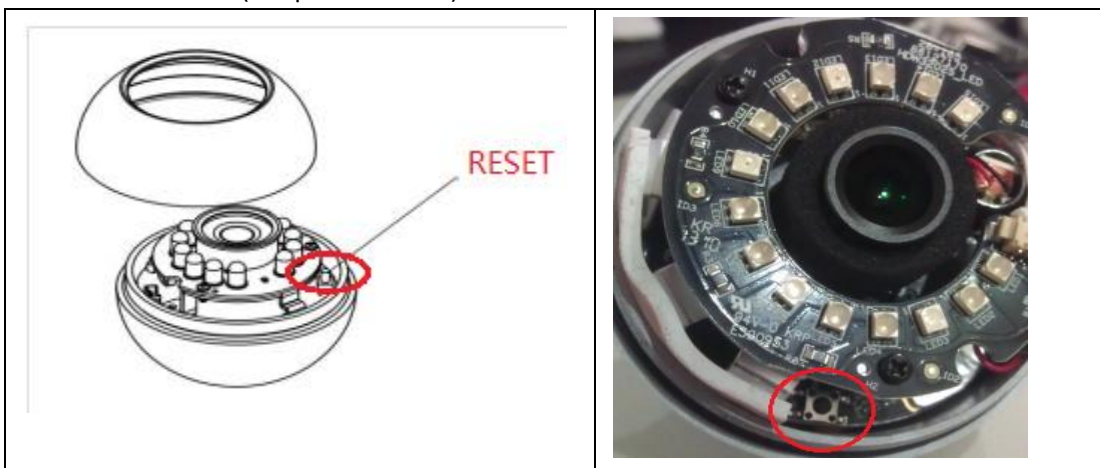
IPC-HDW2100-M

IPC-HDW2100 Series

IPC-HDW2200S

IPC-HDW3300S

The reset button is inside the camera, open the dome camera enclosure and will find it under the IR board.(see picture below)



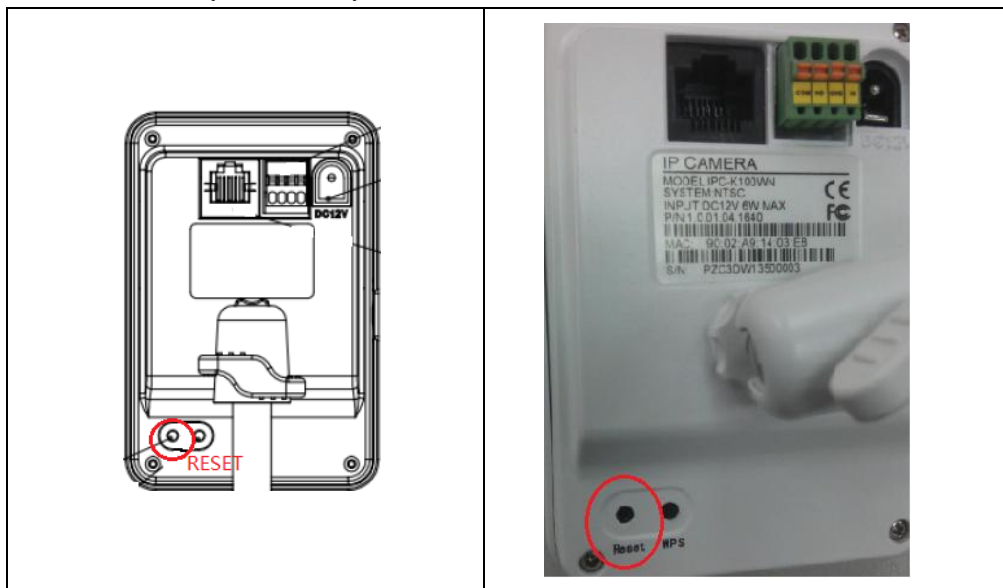
2.8 Home use series

Appearance:

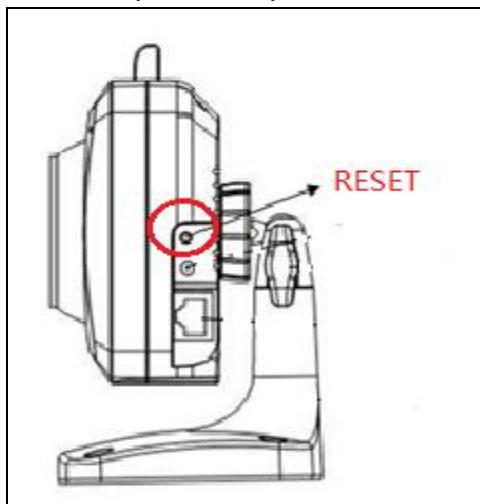


This type of network camera is very simple and small, and there reset button is mostly on the back or side of the camera.

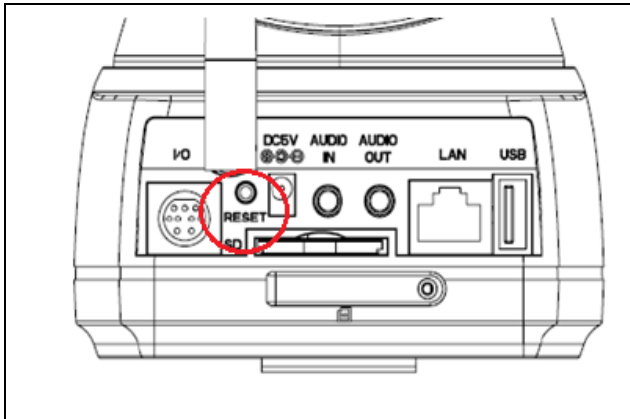
a. K100 series (on the back)



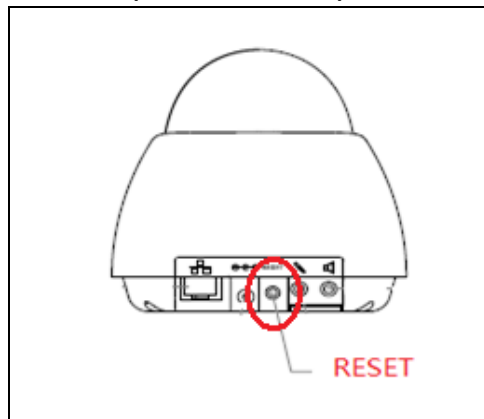
A6 series (on the side)



A7 series (on the back)



A8 series (back in the cover)



Note: For the models not included, you can check the appearance as a reference.