

# How to integrate the ADAM IO into Hikvision NVR

## Device Model:

Hikvision: All I-series NVR . Tested model DS-7732NI-I4;

Version: .... Not fixed

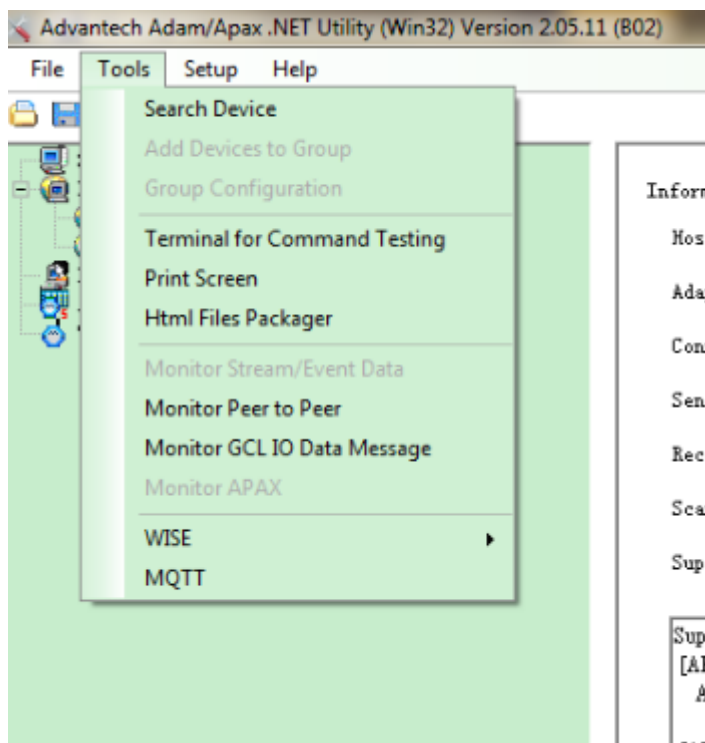
ADAM: ADAM-6060

Version: 5.04 B01

## Step:

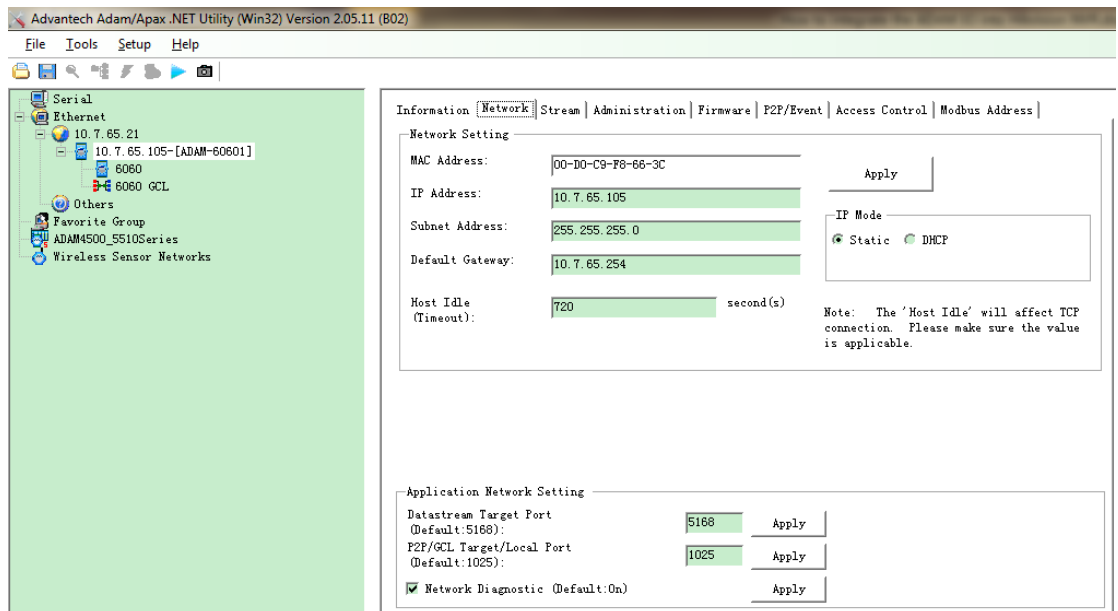
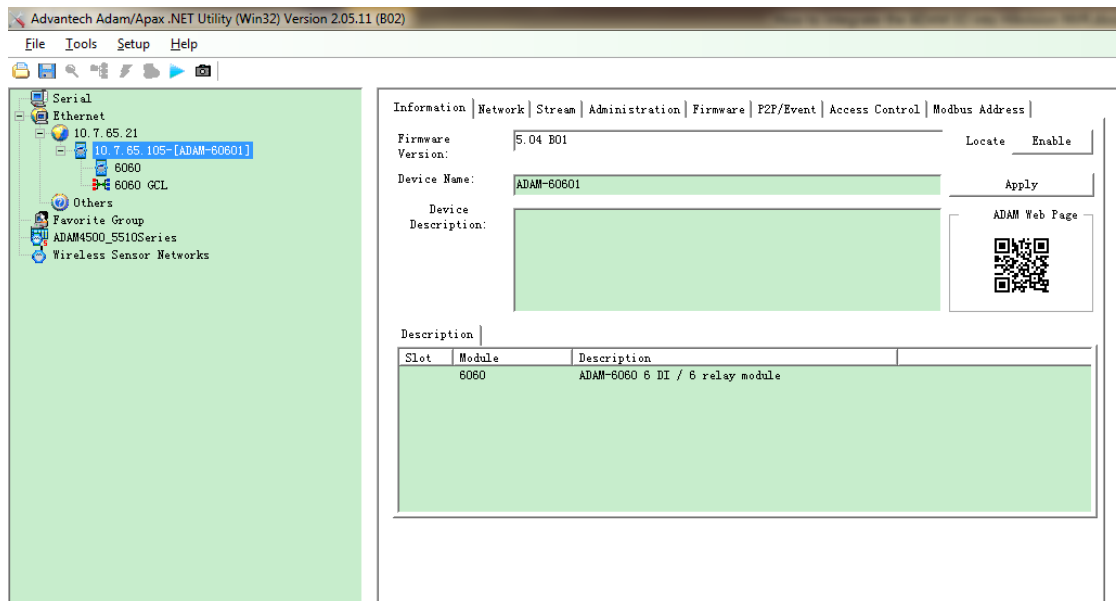
### 1. Configure the IP of the ADAM module

- a. Install the tool “AdamApax+.NET+Utility+V2.05.11+B02.msi”
- b. Use this tool to search Device

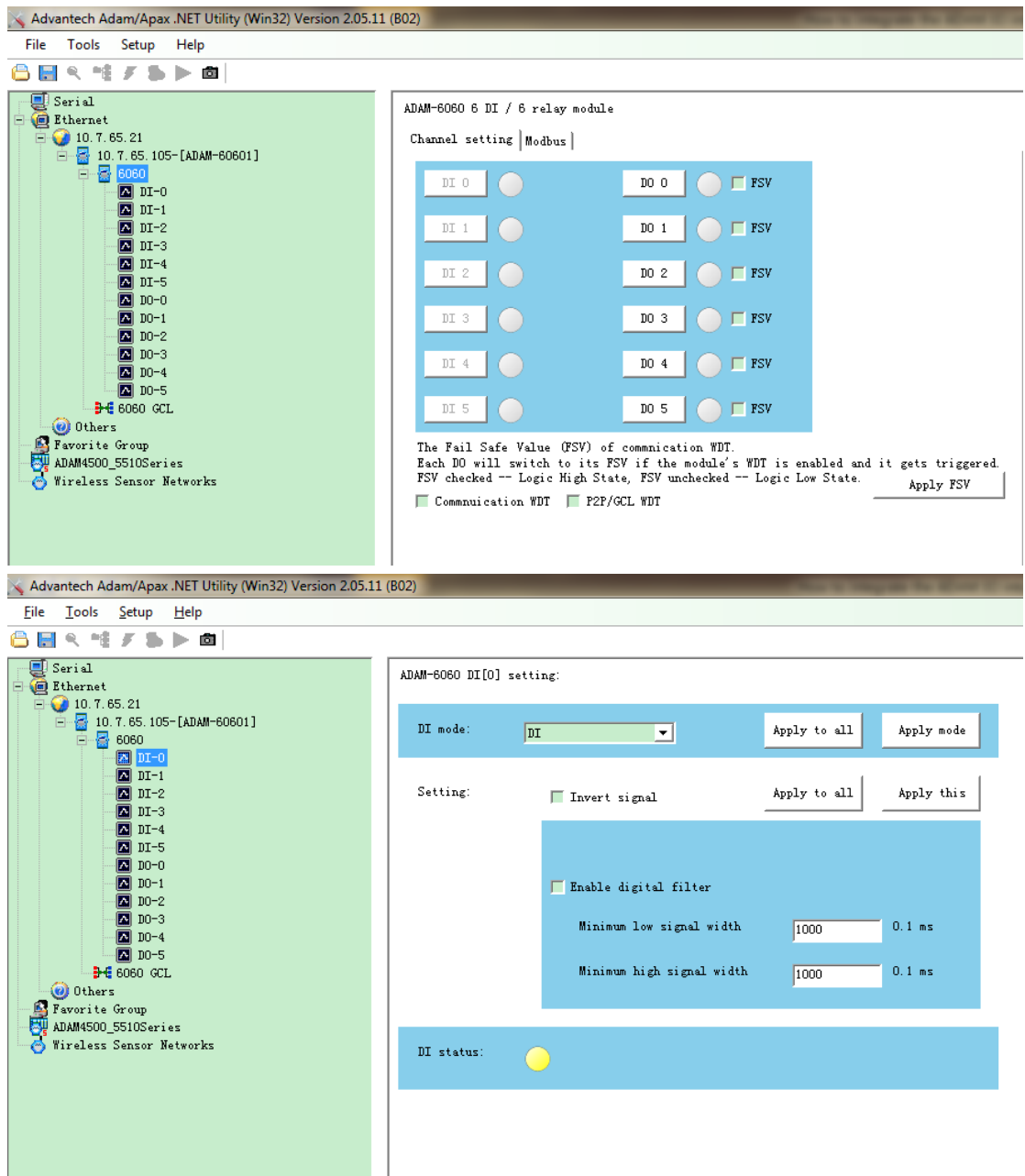


- c. After u search out the device, u can see the below page, u can click the network to change the network setting, like IP address.

The default password of the ADAM device is “00000000”



- d. Then You can click the DI-x or DO-x to configure the Digital input or output

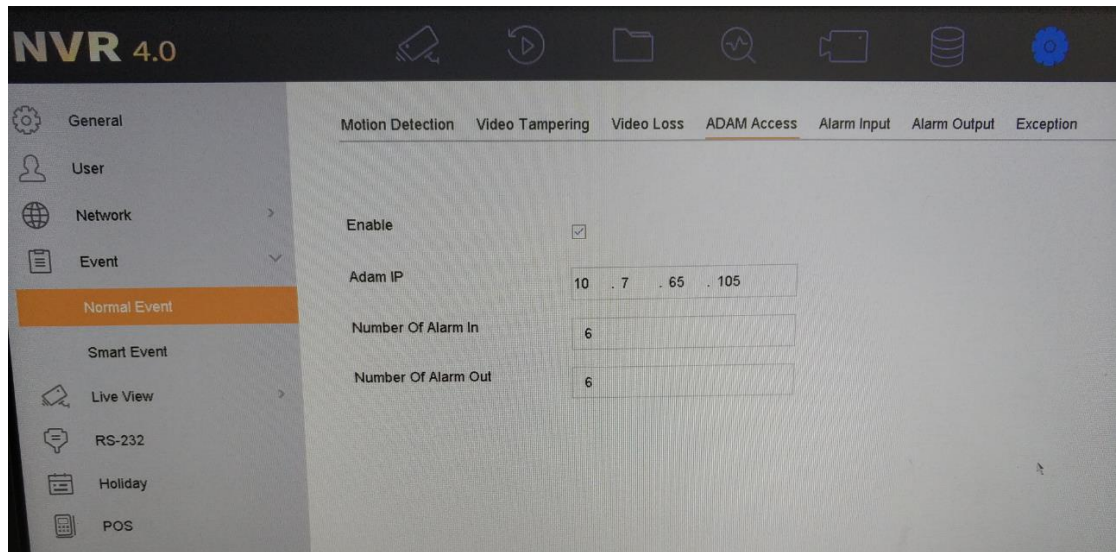


## 2. ADD the ADAM module to the NVR

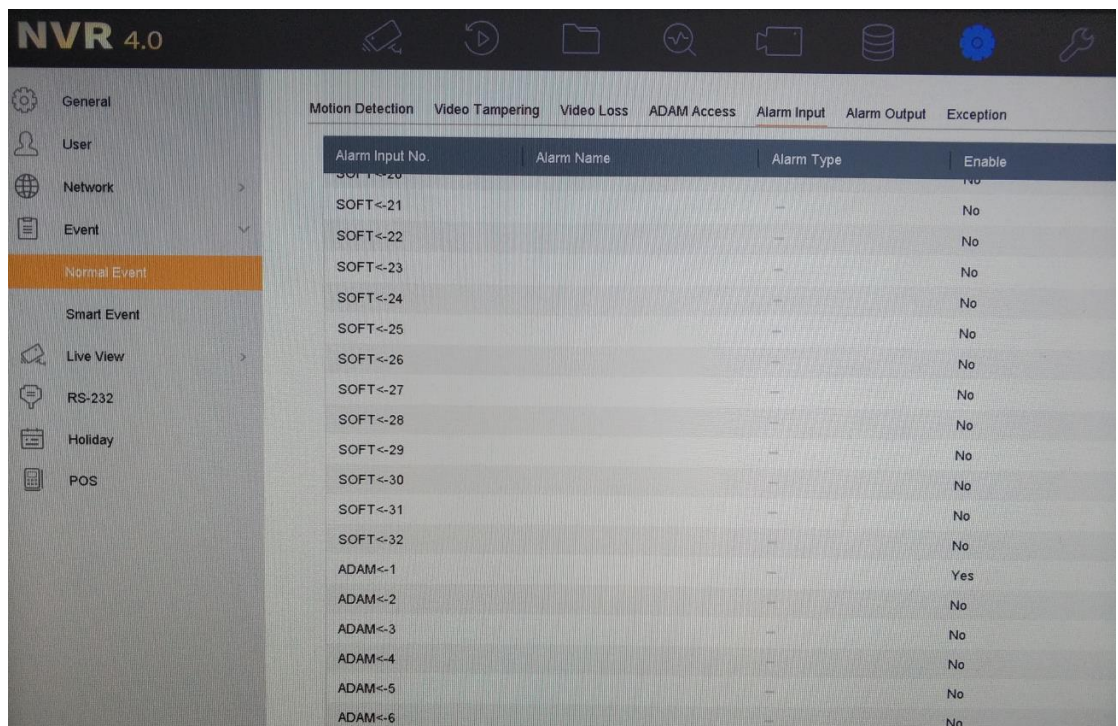
Now it is only possible to finish the setting over local interface.

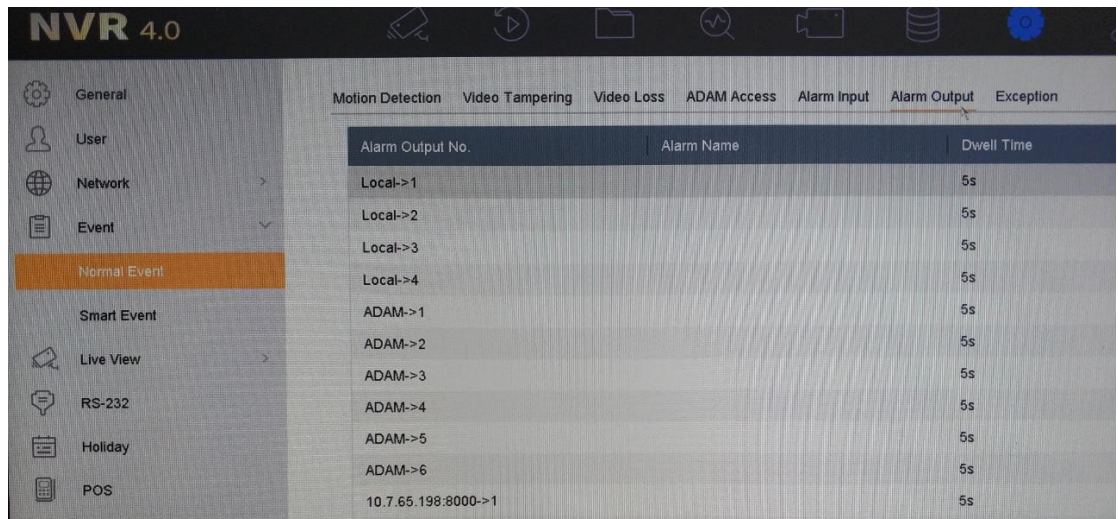
- Go to the setting->Event->normal Event->ADAM Access, enable the function, type in the IP address of the device.
- Type in the alarm in and out number.

**Notice:** The alarm in and out number is very important, please set as the Adam module supported. Because we cannot get the alarm in and out ability from the ADAM device, but we have to know this number to analysis the message it sends.



c. After u add correctly, the alarm in and out will be show In the list



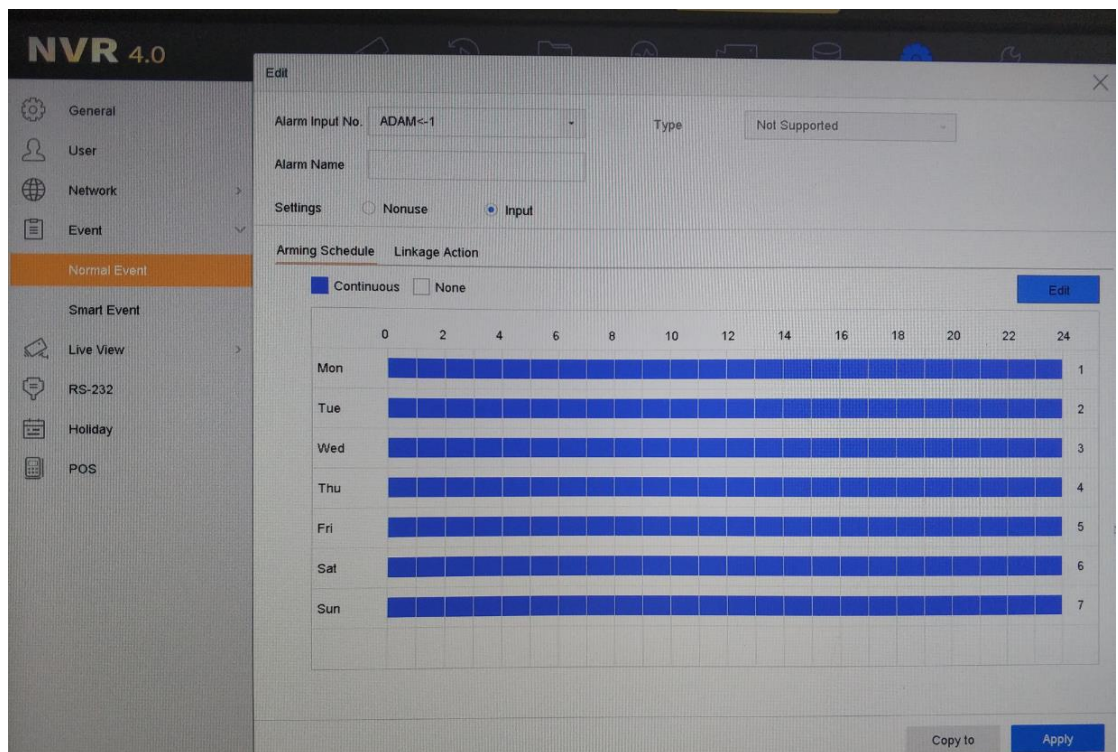


### 3. Alarm status description

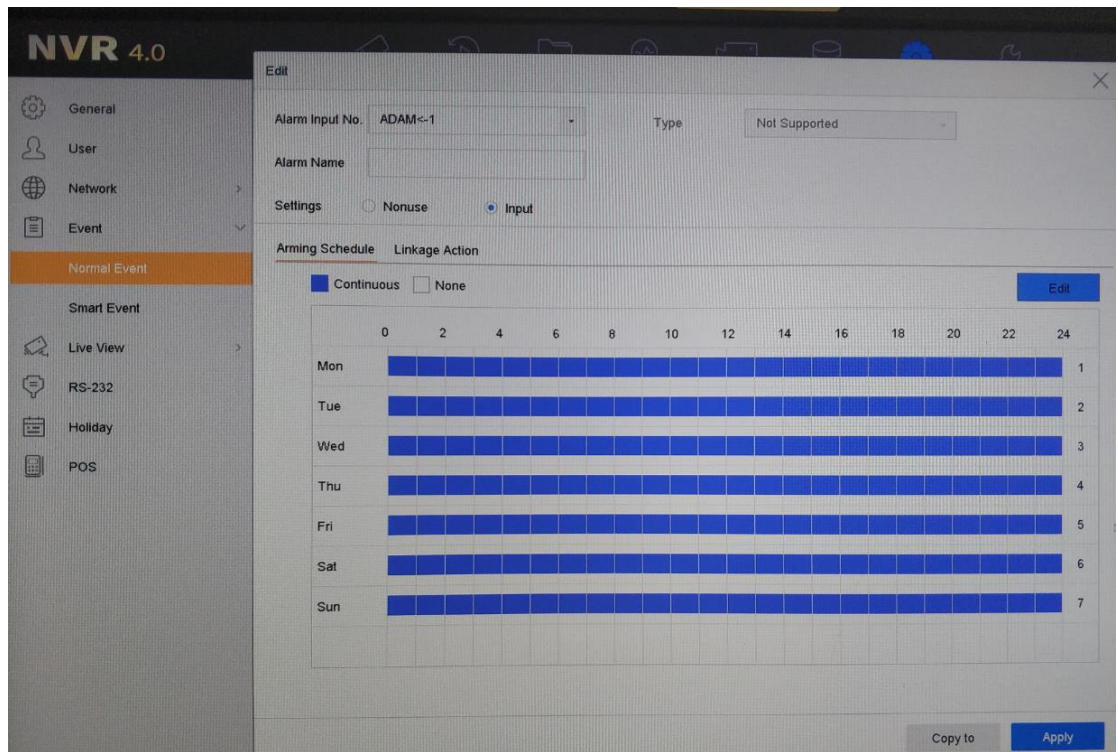
...to be added later after the R&D finished the setting

### 4. Set the linkage of the alarm-in

- You need to enable the input first.
- Then set the alarm Schedule and the

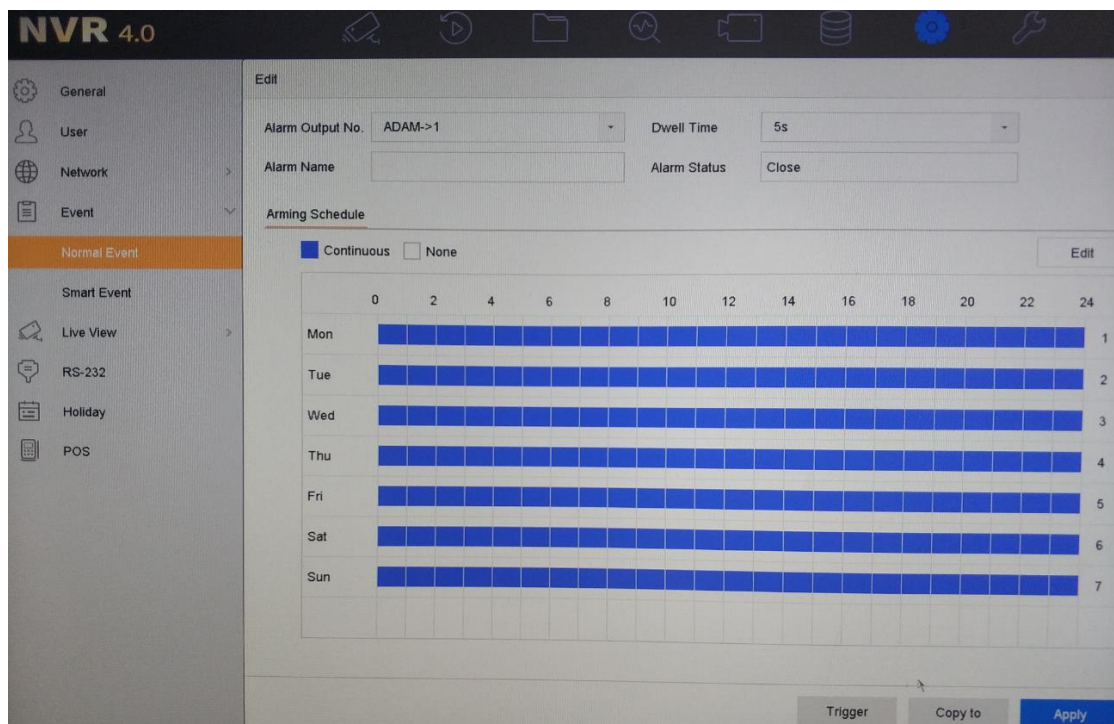






## 5. Use the ADAM alarm-out as a linkage

If u want to use the Adam alarm output, you needs also to enable the schedule.



For the detail alarm-out connection, you need to contact the Adam technical support.